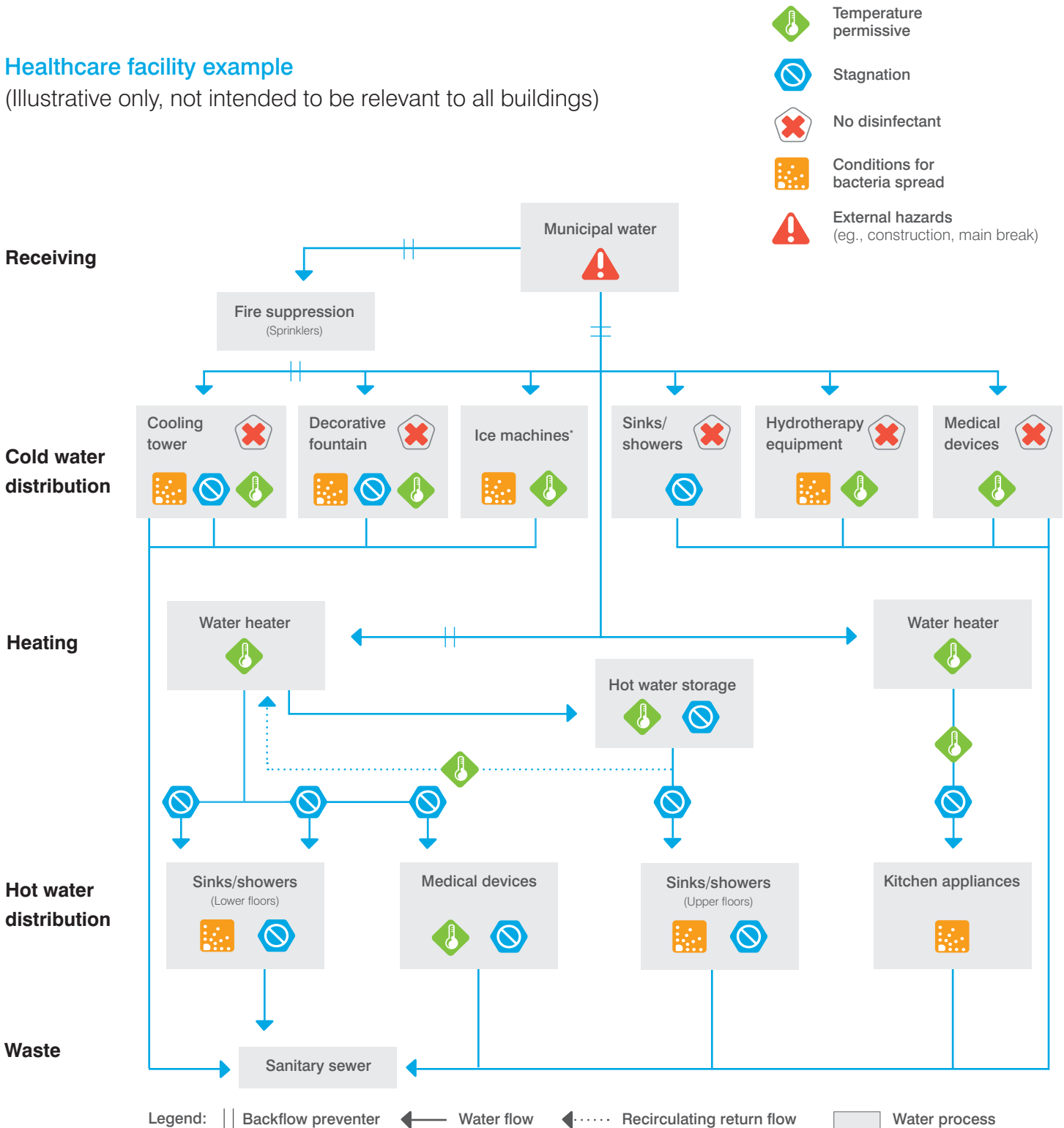


# Areas where *Legionella pneumophila* could grow and spread



## Healthcare facility example

(Illustrative only, not intended to be relevant to all buildings)



Source: Adapted from "Developing a *Legionella* Water Management Program." Centers for Disease Control and Prevention (CDC). 2016:11.

\*For example, patients with problems swallowing may be at increased risk for *Legionella* spread by aspiration.

© 2017 IDEXX Laboratories, Inc. All rights reserved. • 110772-00  
 All ®/TM marks are owned by IDEXX Laboratories, Inc. or its affiliates in the United States and/or other countries.  
 The IDEXX Privacy Policy is available at [idexx.com](http://idexx.com).